

ASSEMBLY DETAILS

These details should be read in conjunction with the setout & construction drawings provided by EZIKIT.

If you require assistance with any aspect of your installation, or would like clarification on any of these details, do not hesitate to contact us by phone, or email.

Support enquiries should be directed to:

phone: 03 6229 9733

email: support@ezikit.com.au

(c) 2016 EZIKIT Kitform Kitchens - All Rights Reserved

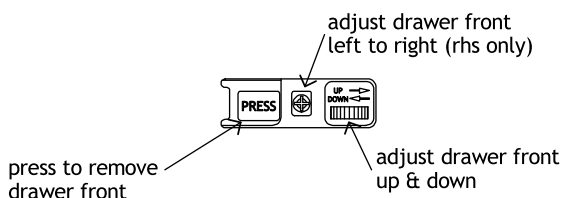
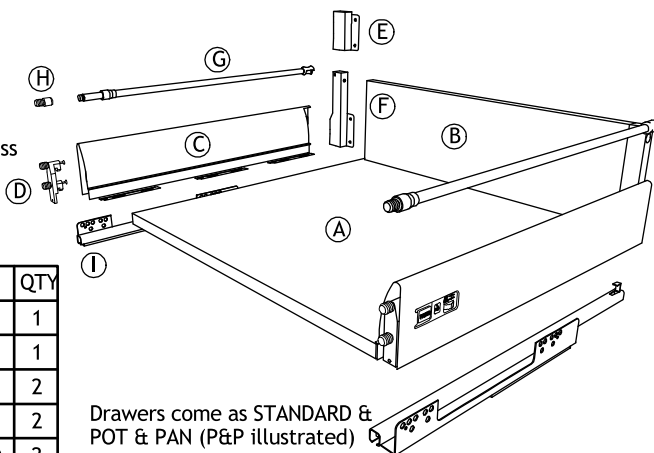
This document should in no way be reproduced, distributed or supplied to another party without the expressed permission of EZIKIT.

INNOTECH DRAWER ASSEMBLY

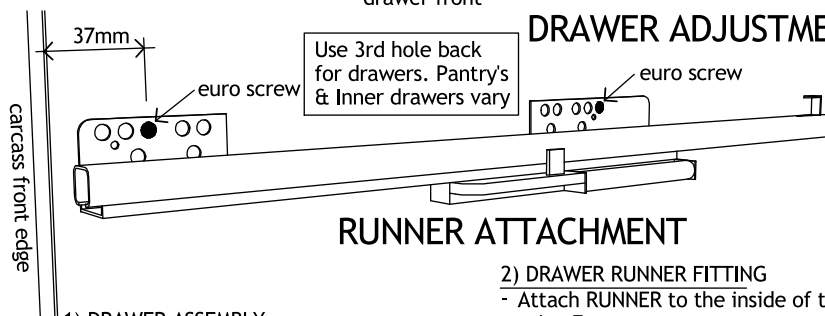
ASSEMBLY TIPS

- Always assemble on a flat surface to ensure drawer is square
- 5mm 'Euro' screws supplied for fixing runners into carcass
- Short screws supplied for assembling drawer box

NOM	DESCRIPTION	QTY
(A)	BASE (with carcass)	1
(B)	BACK (with carcass)	1
(C)	METAL SIDES (L & R)	2
(D)	FRONT CONNECTOR	2
(E)	BACK CONNECTOR (L & R) (standard only)	2
(F)	BACK CONNECTOR (L & R) (pot & pan only)	2
(G)	GALLERY RAIL (p & p only)	2
(H)	GALLERY RAIL CONNECTOR (pot & pan only)	1
(I)	RUNNERS (L & R)	2



DRAWER ADJUSTMENT



RUNNER ATTACHMENT

2) DRAWER RUNNER FITTING

- Attach RUNNER to the inside of the carcass using Euro screws

- Sit assembled drawer on top of runners and push all the way in until it clicks in place

3) DRAWER FRONT ATTACHMENT

- Attach FRONT CONNECTORS to Drawer Front
- Connect Drawer Front to Assembled Drawer which will click in place

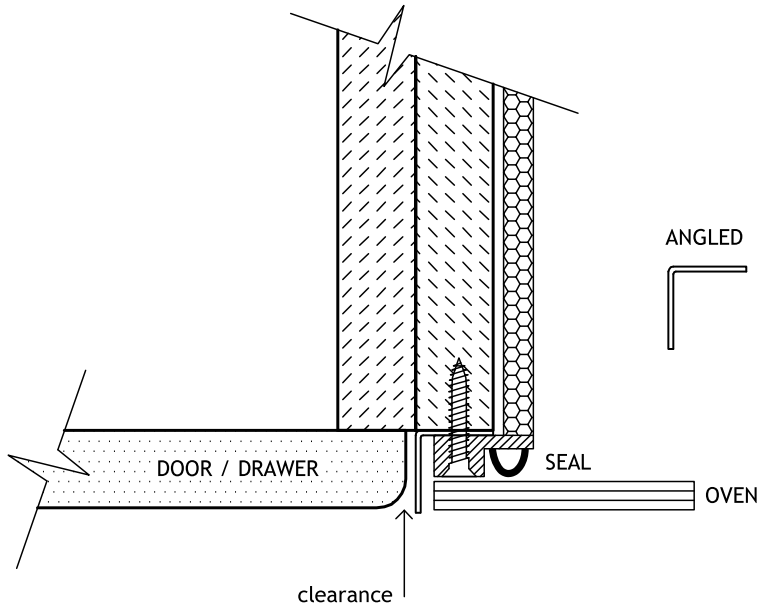
ORDER OF ASSEMBLY

1) DRAWER ASSEMBLY

- Attach BACK CONNECTORS to METAL SIDES
- Screw BASE to METAL SIDES from underneath using Short Screws
- Screw BACK between BACK CONNECTORS
- Clip GALLERY RAILS to BACK CONNECTORS (Pot & Pan drawers only)

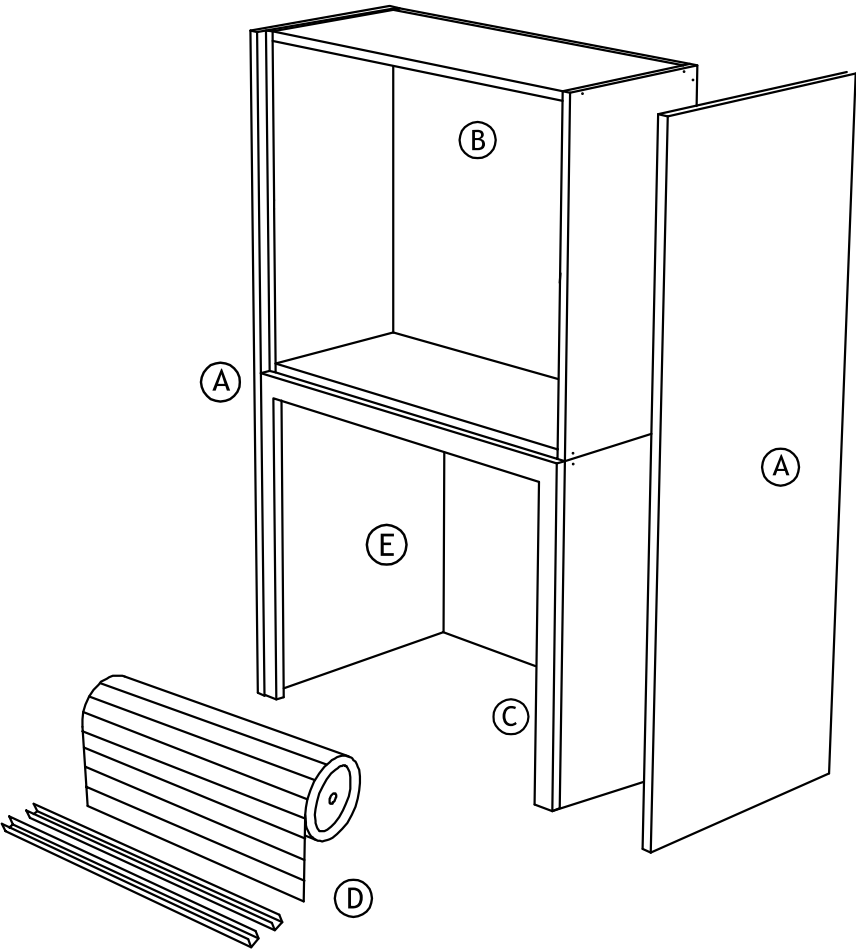
HEAT DEFLECTOR

Heat deflectors are designed to deflect heat away from vacuum formed & other types of doors. EZIKIT recommends that they are installed alongside ovens which do not have inbuilt deflector surrounds.



Please note that if heat deflectors are not used where recommended, the warranty will be void.

ROLLER SHUTTER TOWER

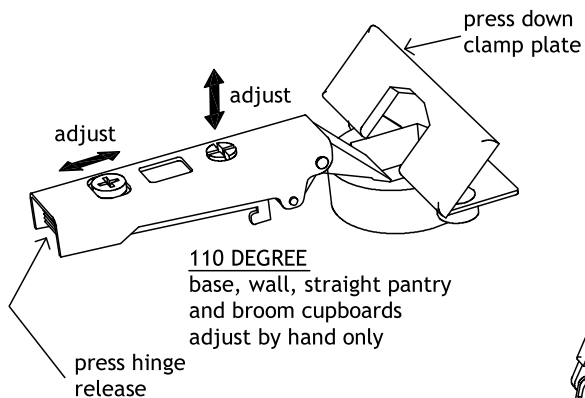


NOM	DESCRIPTION	QTY
(A)	COLOURED END PANELS	2
(B)	WALL UNIT	1
(C)	COLOURED FRAME	1
(D)	ROLLER SHUTTER KIT	1
(E)	APPLIANCE UNIT	1

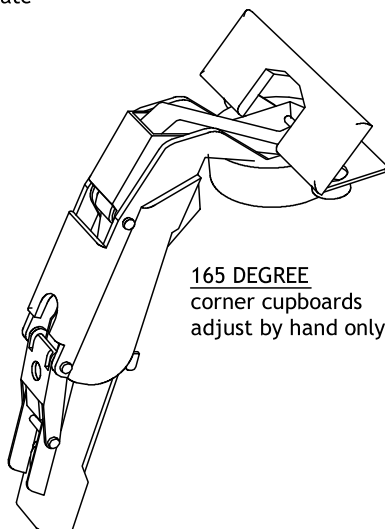
CUPBOARD SPECIFIC TIPS

- Refer to roller shutter specs and installation details provided with the roller

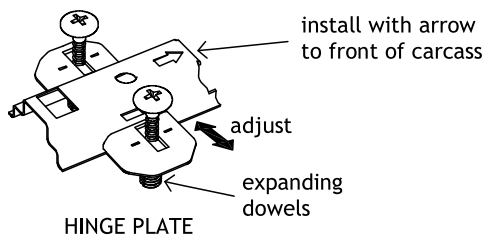
HINGE DETAILS



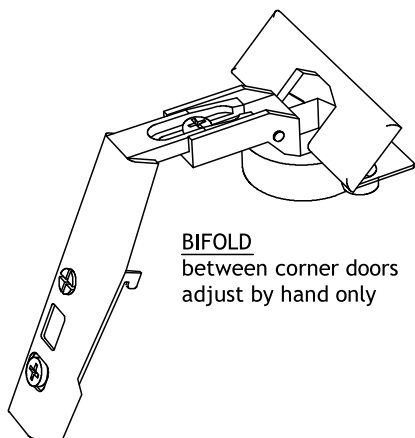
110 DEGREE
base, wall, straight pantry
and broom cupboards
adjust by hand only



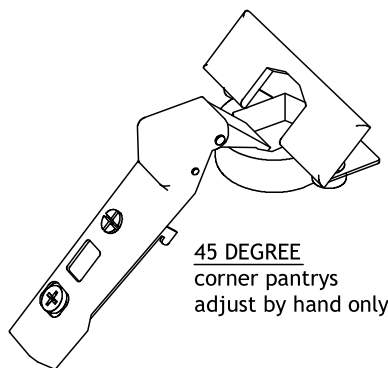
165 DEGREE
corner cupboards
adjust by hand only



HINGE PLATE



BIFOLD
between corner doors
adjust by hand only

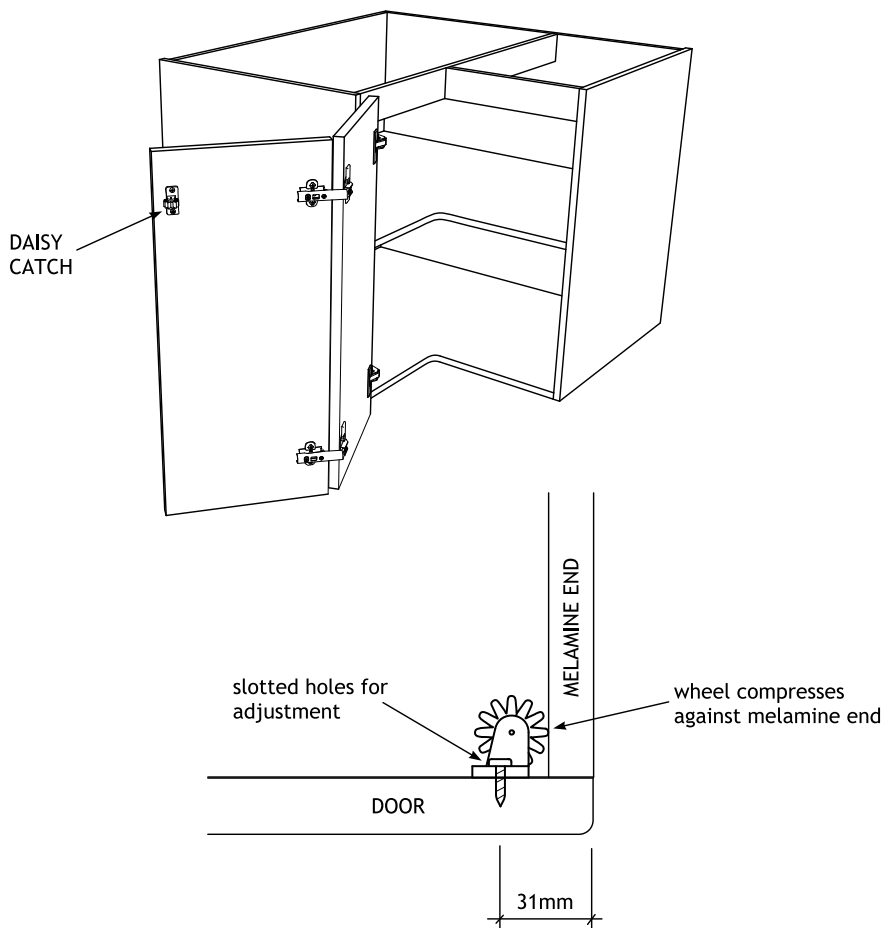


45 DEGREE
corner pantrys
adjust by hand only

DAISY CATCH

Daisy catches are designed to hold a corner door in place and relieve the hinge from any weight from the door when in the closed position.

They are not absolutely necessary, but can assist in the final adjustment of the door.



SCREWS & FIXINGS



6G 30mm SCREW
carcass to carcass
carcass to panels



8G 32mm SCREW
adjustable legs



8G 45mm SCREW
carcass assembly
self countersinking



8G 50mm SCREW *
wall fixings

* wall fixing screws
suitable for studwork
for masonry additional
fixings will be required

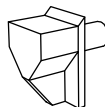
NOTE: Screws are bagged & labelled
according to their specific purpose.



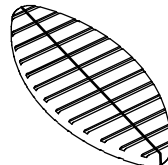
5mm EURO SCREW
drawer runners
std drawer assembly



15mm SCREW
214 drawer front stabiliser
soft close drawer assembly
angle brackets

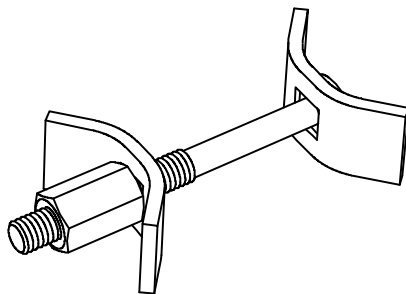


SHELVING PINS
for adjustable shelves



'BISCUIT' or 'LAMELLO'
for concealed fixings

BENCHTOP ASSEMBLY



BENCHTOP CONNECTOR
use spanner to tighten

ADJUSTABLE LEGS

